

# CARE Connections

March 2026  
Volume 23, Issue 1

## Letter from the Director

by Jen Kipka



Spring always feels like a season of renewal—a time for new beginnings, fresh starts, quiet reflection, and joyful anticipation for the months ahead. With those sentiments in mind, we are excited to share that CARE is already hard at work preparing for our 2026 annual fundraising events, including our signature Pork Chop Dinner, and our 5th Annual CARE Golf Tournament. Our fundraising committee has been busy planning some new and exciting updates, while still honoring the traditions that make these events so special to our community.

This year, our beloved Pork Chop Dinner will take place on Thursday, May 14th at a **new location**. We are thrilled to invite you to join us at Northern Hollow Winery in Foley from 4:00–7:30 p.m. This event truly takes a community to make it successful, and we rely on many generous volunteers to help set up, serve, and manage the evening.

Along with the delicious dinner, this year's event will feature a plant sale, bake sale, silent auction, basket raffles, and several other fun opportunities to support CARE. Every contribution made during this event helps fund our mission of serving seniors throughout our community. Even more meaningful—donations can be used as matching funds for our Department of Human Services grant, meaning your generosity can **double its impact**.

We would be incredibly grateful for your support through event sponsorship, baked goods, plants from your garden, silent auction items, or experience-based donations, which are always in high demand. You are also invited to stop by the CARE

## Editor's Notes

by Gini Kalton



Well folks, I heard the birds singing on March 17th! Either they were celebrating the return of spring, or they are St. Patrick's Day enthusiasts. No matter to me, I felt the joy and I appreciated the songs. The dogs and I are exploring the yard and soaking up any sunshine that appears!

Something else that will be fun to listen to is the CARE radio spotlight coming up on April 27th (Monday). If you tune in to AM 1240 or FM 95.3 for "It Matters with Kelly Cordes," you will be treated to an interview with CARE and Kelly. As a member of the Central Minnesota Volunteer Coordinators Association, CARE has been selected to participate during this morning show. Representing CARE will be our Executive Director, Jen Kipka, and our Volunteer Coordinator, Sarah Kellen.

As you peruse the articles this quarter, make note of all the upcoming events and offerings and share them with all your family, friends and neighbors. This is a busy season for us all, and we can hardly wait to get started!

We look forward to seeing you all and visiting after the long, cold winter.

Happy Spring Everyone!

*Gini*





**OFFICE HOURS:**  
MON - THURS  
8:00 am - 3:00 pm

**LOCATION:**  
321 6th Avenue  
Foley, MN

**MAILING ADDRESS:**  
PO Box 65  
Foley, MN 56329

**Email:**  
info@CAREelders.org

**Web site:**  
www.CAREelders.org

**Board of Directors**

Joyce Rife, Chair  
Ron Miller, Vice-Chair  
Karen Kampa, Finance Chair  
Gini Kalton, Secretary  
Evelyn Kirby  
Jared Gapinski / Scott Johnson  
Matt Riley  
Mary Keating  
Tara Beack  
Sug Latterell  
Jackie Struffert  
Scott Manea  
Jill Johnson

**Executive Director**  
Jen Kipka

**Newsletter Editor**  
Gini Kalton

Board meetings are open to the public on the fourth Thursday of each month at 5:00pm in the CARE conference room.

From the Director  
... continued from page one

office to purchase your dinner tickets in advance for a chance to win **\$50 to use at the silent auction.**

We are also excited to announce that our **5th Annual CARE Golf Tournament** will take place on Thursday, June 4th at Stone Creek Golf Course in Foley. Mary Spiczka will once again be hosting this wonderful event. Golfers can look forward to fresh grilled burgers and brats with all the fixings followed by a fun day on the course! Be sure to call our office soon to register your team—space is limited, and last year's tournament filled up quickly! We are also seeking sponsors for the event, and extend our heartfelt thanks to the businesses and supporters who continue to stand behind CARE year after year. We also welcome new businesses who would like to join us in supporting our mission.

In addition to our events, CARE will once again be updating in-person NAPIS forms for all clients receiving services due to regulations that went into effect last year. With more than 200 clients currently being served, this project requires significant staff time and coordination. We would deeply appreciate volunteers willing to help by driving clients to the office to complete forms or assisting them in filling out paperwork in their homes. If you are interested in helping with this important work, please contact the CARE office.

As we look ahead to these events and the year to come, we are reminded how fortunate we are to be part of such a compassionate and supportive community. Last year alone, CARE proudly served 234 clients—and the need continues to grow.

A handwritten signature in black ink that reads "Jen".

Jen Kipka  
CARE Executive Director



## **VOLUNTEER CORNER** BY SARAH KELLEN, CARE VOLUNTEER COORDINATOR

**National volunteer week** is celebrated April 19-25 this year. On April 22nd the St. Cloud Great River Regional Library is hosting a Volunteer Celebration from 3 - 6 p.m., in the first floor community room, with snacks, service projects, networking and door prizes. They ask that you join them in celebrating local volunteers who have helped build a stronger community, and encourage you to bring a friend. CARE volunteers are encouraged to join the fun! For more information, please email [SCAVC@gmail.com](mailto:SCAVC@gmail.com)

**The Annual CARE Volunteer Appreciation** event, hosted by the CARE board of directors and staff, will be held on Tuesday, August 11th. Watch for all the details in our June issue of the CARE Connections newsletter.

### **VOLUNTEER DRIVERS - MARK YOUR CALENDARS**

**Annual Driver Review Meetings** are scheduled on three days in July. Please check your calendar today, choose your preferred date, and notify the CARE office of your choice as soon as possible (details to follow in the June issue of the CARE Connections newsletter):

**Tuesday, July 14 at 10:00 a.m.**

**Thursday, July 16 at 1:00 p.m.**

**Tuesday, July 21 at 10:00 a.m.**

### **VOLUNTEER OPPORTUNITIES - VOLUNTEERS NEEDED**

**Families and organizations are encouraged to work together to give our clients a clean-up for the season.** Sunshine and warm weather are just around the corner! As the spring season approaches, please consider becoming a volunteer that helps your aging neighbors do spring yard cleanup, lawnmowing and/or garden preparation. . A little cleanup and care-taking can be such an encouragement for our clients who have challenges doing it on their own. If you, your family, or your group would like to help with spring yard and garden preparation, call CARE 320-968-7848.

### **THANK YOU to a great fundraising team for the work they do in support of this program!**

This committee of volunteers not only works with the executive director, program staff, and the board to establish an annual fundraising plan, that incorporates a series of events and/or sales to raise money to meet the CARE's budget, but they donate hours to see that our fundraising events are successful.

*Pictured left to right back row:*

Barb Semrau, , Jen Kipka, Jackie Struffert,  
Ev Kirby, Sarah Kellen *Front row:* Joyce Rife,  
Linda Goodman, Brenda Berkebile,  
Pat Abfalter, and Lou DeMarais

*Not Pictured:* Jordyn Hoffman, Karen Kampa,  
and Sug Latterell





## PRESENTATIONS - SHARING INFORMATION AND ANSWERING QUESTIONS

**Rice Area Seniors** were visited by Volunteer Coordinator, Sarah Kellen on Tuesday, March 3rd to share about the CARE program. They also invited Sarah to stay for a few games of bingo. She left with a big win – the final black out game. This group of seniors meet at the Creamery Café in Rice, MN on the first Tuesday of the month at 12:15 p.m.

**The Becker Business Expo** was attended by Board of Directors and Communications Committee members Joyce Rife and Gini Kalton on Saturday, February 7th from 10am until 2pm. Over a 130 attendees visited the CARE booth, where they were given an opportunity to play “CARE trivia” and “Plinko” to win prizes, while Joyce and Gini answered visitors’ questions about the CARE program.

**Rice Lion’s Club** monthly meeting was attended by Sarah Kellen to thank them for their financial support of the CARE program. As residents of the community of Rice, volunteers Barb and Ron McKeever and Board member Scott Manea gave testimony to the work they are doing with clients in the Rice area. Thank you Rice Lions for your continued support!

**The Foley Community Connect Expo** was attended by Volunteer Coordinator, Sarah Kellen, and CARE Board of Directors Chair, Joyce Rife, on Saturday, March 14th, from 9am to 12 noon. Sarah & Joyce were able to share with over 110 attendees about the CARE program.

*Pictured right:*  
Sarah & Joyce at the  
Foley Community  
Connect Expo.

Photo courtesy of  
Bill Kalton



Volunteer Coordinator, Sarah Kellen, met for lunch with a group Rice area volunteers at The Old Creamery Cafe on March 18th.

These volunteers hope to meet for lunch every few months to connect as volunteers and friends.



## CARE ART CLASSES - MEET THE INSTRUCTOR

Since August of 2025, Michelle Kiffmeyer has invested much time gathering supplies and preparing to teach the Art Class. Her cheerful spirit and creative energy has participants excitedly returning for more. Michelle expressed, "I love sharing my passion of arts and crafts with others. The women I've met through this program have been so great, welcoming and appreciative. I look forward to seeing them each month. The most rewarding aspect is seeing everyone's creativity shine! Many times, I've had participants hesitant to try something new. I love encouraging them and helping them along the way. Seeing their finished projects at the end of class, and their smiles knowing that they created this piece, is absolutely heartwarming."



Michelle was invited to teach the class by Executive Director, Jen Kipka. Six years ago Michelle started a small business (MK Designs) making signs, clothing, gifts, etc. Jen has been a valued supporter for many years and thought Michelle would be a great fit. Michelle agrees that it is!

As an Occupational Therapist, Michelle finished her master's degree, and spent 6 months interning at the Foley Nursing Home in the rehab department. She was responsible for developing and hosting a weekly program for the residents of assisted living, which focused on social, physical and cognitive health. She then treated in an outpatient pediatric clinic for almost 12 years before making the switch to working MK Designs full-time. She continues working in the clinic per diem and LOVES the variety of both her jobs.

Michelle, along with her husband Ben, son Brecken (12yrs) and daughter Emersyn (9yrs) moved to Foley 9 years ago and built a home. They absolutely love being in the Foley area. The neighbors and community members they have met over the past 9 years have made them "feel so welcomed and a valued part of this amazing community." Michelle's husband owns a plumbing company (Kiffmeyer Plumbing) and both of their children are very active in sports. You'll typically find them at a hockey rink or baseball/softball field. Michelle also enjoys spending time with family and friends, reading, and creating!



Michelle believes her role at the CARE art program has returned her full circle to where she started. She states, "I believe the senior citizen population of a community is incredibly valuable and worth investing our time and care in." The CARE is thankful to have such an enthusiastic and devoted instructor.

**The CARE Art Class is hosted the third Tuesday of every month, from 10 am to 12 noon at New Life Church in Foley for all seniors ages 60 years and older. Please call the CARE office in advance to reserve your space at 320-968-7848.**



## FOR YOUR HEALTH - FRIENDLY VISITS AND PHONE CALLS

Did you know that CARE has over 50 volunteers who are excited to pay a friendly visit or connect over the phone with our clients? You might ask – What does friendly visiting have to do with a person’s health? Research has linked social isolation and loneliness to higher risks for a variety of physical and mental conditions. By offering this service, our hope is that clients and volunteers will engage in meaningful connections, which may help clients maintain their well-being and improve their quality of life.



Sandy, a volunteer for over 20 years, along with her husband Russ, has been helping Mary, age 86, for 13 years. Mary says Sandy is like an adopted sister. She is very comfortable with having Sandy in her home; saying that she is “genuine, kind and so friendly”. Having volunteers from CARE visit Mary helps to lessen the stresses related to aging. Mary likes that she gets to know the volunteers, and that it is “a reflection of a small-town attitude of caring.” Often, she and Sandy will call one another to check in. Mary says that Sandy and Russ have been made part of her family. Sandy has been enjoying friendly visits with Mary, and states they seem to be “matched up with similar interests, that they think alike and laugh a lot.” Sandy wants to help Mary feel comfortable and safe. She volunteers because she believes that by helping others it can make them feel better about their lives.

John, age 79, has developed a friendship with volunteers Kathy & Ralph. As a client, he is thankful for their straightforward thinking, and he appreciates how kind and courteous they are. He enjoys having conversations with them because they are people of integrity and he enjoys talking about life with them. He says they are great volunteers!

As a volunteer myself, I have enjoyed time with Rene, age 86, over the past 18 years. We spend time sitting at her kitchen table talking about life. Trust is very important to Irene and she is thankful she can trust me. She says I am like one of her children and that she has developed a “grandmother” type relationship with my children. She smiled as she told a story of the time when, by sharing a bowl of ice cream with my children, she put a smile on their faces. In the early years, my children helped Rene with her yardwork, housekeeping and home repairs, but over the years the biggest service to Irene has been visiting her at her kitchen table and checking in through weekly phone calls. Rene states, “If someone has joined CARE as a volunteer, they must care about others.”



Ardelle, age 79, has been volunteering with CARE for 3 years. Her husband is a volunteer driver, and she decided to make friendly phone calls because it fits her schedule and, as she is elderly herself and not very mobile, this allows her to stay in contact with others. She believes that, “One act of kindness or caring, even if brief, can change a person’s day.” She has made a connection with one client that is very ill, and can help by listening to the client’s health challenges or anything else they choose to talk about. Ardelle would like to share with clients of CARE that, “A person does not have to live a solitary life. Everyone has a story of their life experiences. Sometimes people have many things in common. Both the client and the volunteer benefit from these chats.” She would encourage clients to try friendly visits or phone calls.



Carol, previously a client of CARE, is now a volunteer and believes in the importance of friendly visiting. She had spent many years caring for her husband, and after his passing four years ago she experienced a time of feeling of little value to others. She then moved to Foley to be closer to her family. It was initially hard for her to leave her church, her friends and the familiarity of her town, and she wished she had had someone here in Foley she could have visited with. She is excited to volunteer with CARE because she wants to be there for others, just to listen to them and make them feel comforted, and that they belong.

If you are experiencing a time of loneliness or feeling isolated, consider giving these wonderful volunteers an opportunity to spend time with you. Visits can include time around your table having coffee or a phone call to share conversation about life. Card playing or sharing a hobby together can be an encouragement to you as well as our volunteers. Being a volunteer with CARE is an exceptional blessing. As volunteers, we value meeting the needs of seniors who may be lonely with a visit or phone call. Our hope is that aging seniors will be able to have a connection with us that impacts both physical and relational needs in a positive way.



## CARE SENIOR SOCIAL - LUNCH, MUSIC & BINGO!



### *Musical Entertainment:*

January (*left*)  
**Bob Juetten**

February (*right*)  
**Doug Scott**

March (*far right*)  
**Kevin Wegman**



"It's gettin' better all the time!"  
"A great place to visit with friends!"  
"Friendly and fun every time!"



*Left:* Board Members, Sug Latterell and Jackie Struffert served lunch.



## DUELM KNIGHTS OF COLUMBUS BREAKFAST FOR CARE

Imagine the scent of fresh homemade pancakes, and you can almost taste the goodness this breakfast has to offer, including sausage, scrambled eggs, caramel rolls and fresh fruit!



Since 2012, the CARE Program has been blessed to be the beneficiary of one of the Duelm KC Breakfasts held each spring—this year it will be on Sunday, April 19th at the Saint Lawrence Parish Hall from 8:30 to 12:00 noon.

The all-you-can-eat meal is \$13.00 for adults, children 6 to 12 years \$6.00, and children 5 and under eat free. This annual event is a wonderful way to support the CARE Program, so invite your family and friends and join us for breakfast!



## CARE 5TH ANNUAL GOLF TOURNAMENT

### Golf FORE a great cause!

We are eagerly anticipating our 5th annual CARE golf tournament at Stone Creek Golf Course in Foley on Thursday, June 4<sup>th</sup>! We are seeking hole sponsors as well as teams of 4 to support our event (Get those in as quickly as our teams spots sold out last year!) Please reach out to Jen at the CARE office at [jenk@CAREelders.org](mailto:jenk@CAREelders.org) or at 320-968-7848 for more information! This is a great way to have some fun while financially supporting the many services we provide to our clients in the community of Foley and surrounding areas.



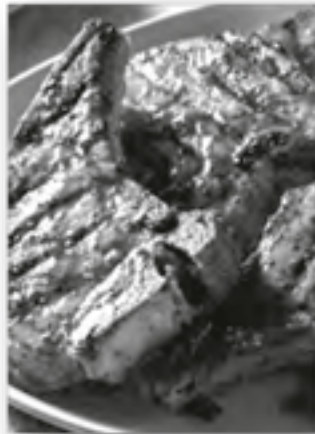
Visit the  
**CARE Corn Dog Cabin**  
**June 15, 16, & 17**

Featuring:  
**Corn Dogs,**  
**Chicken Strips,**  
**Whole Dill Pickles**  
**and**  
**Ice-Cold Bottled Water**



Silent Auction | Plant Sale  
Bake Sale | Basket Sale

PORK  
CHOP  
DINNER



Pork Chop Meal \$18.00  
Kids Hot Dog Meal \$5.00



Thursday, May 14TH 4:00-7:30 pm  
Northern Hollow Winery, 6120 105 Ave NE, Foley

Purchase advance tickets for a chance  
to win \$50 towards the Silent Auction

Tickets also available for purchase at the door.



Scan the QR code for more  
information about CARE.

Not coming for the meal? No problem.  
You are invited to stop by and take part  
in the sales and auction instead!

***New opportunity in 2026: Call for more information 320-968-7848***

Consider becoming a Platinum, Gold, Silver, or Bronze sponsor for this event. Sponsorship includes event recognition, and recognition in future issues of this newsletter. By supporting CARE in this way, you publicly demonstrate your commitment to the CARE mission to support area seniors to remain living independently in the home of their choice, strengthening our community.



## PLANT SALE RETURNS AT THE ANNUAL PORK CHOP DINNER EVENT!

We're thrilled to announce the return of our Plant Sale at this year's Annual Pork Chop Dinner on May 14th! Last year's plant sale was a tremendous success, and we're excited to build on that momentum. A heartfelt thank you goes out to everyone who generously donated plants, making the event a delightful experience for our community.

**Get Involved!** Our community's enthusiasm for plants was evident last year, especially for vegetables like peppers and tomatoes. If you enjoy seed starting, we invite you to grow some extra plants for this year's sale! Perennials were also a hit, so if you have any overgrown plants in your yard, consider dividing them to find new homes. This not only helps our sale but also gives your remaining plants a chance to thrive!

**Donation Details** To ensure a vibrant plant sale, we kindly ask that all donations are healthy and well-prepared. Here's how you can contribute:

- ◆ **When to Donate:** drop off your plant donations from May 11th through May 13th, 8 AM - 3 PM at the CARE office at 321 6th Avenue, Foley.
- ◆ **Plant Preparation:** please dig and pot your plants *at least two weeks* before the sale and keep them well-watered. (Only healthy plants, please. No diseased, infested, or invasive species.)

**What We Need from You** To help us organize and promote the sale, please provide the following details with your donations:

- ◆ What the plant is (name/type)
- ◆ Color of flowers, fruit, or foliage
- ◆ Location preferences (full sun, partial shade, etc.)

If you have any extra pots available, we would love to hear about them! We can coordinate to ensure everyone who needs pots gets the right match for their donations.

**Why Your Donation Matters** All proceeds from the plant sale will support services provided by CARE to support your area neighbors ages 60 and older to continue living independently in the home of their choice. Your contributions not only enrich our local environment but also uplift our community members in need.

Let's make this year's plant sale another wonderful event, filled with green thumbs and community spirit! Thank you for your generosity and support! For any questions, or to let us know about your donations, feel free to reach out! Let's dig in and make a difference together!





## BENTON/SHERBURNE CORN GROWERS SUPPORT CARE VOLUNTEER DRIVERS

Jeremy Johnson, in his role as a board member serving the Benton/ Sherburne County Corn Growers Association, presented CARE Executive Director, Jen Kipka with a generous donation of \$1,000 in gift cards for CARE volunteer drivers to help offset their driving expenses. Thank you to the Association for seeing the value of our volunteers’ service, and for supporting them.



CARE volunteer drivers provide tens of thousands of miles of service every year to assist seniors with everyday needs, including medical and dental appointments, grocery shopping, and attending events.



## FOLEY AMERICAN LEGION DONATION TO CARE

Joe Kaproth, pictured with CARE Executive Director, Jen Kipka, delivered a donation from the Foley American Legion to help with the program’s rent and utilities expenses in 2026. The board of directors and staff at CARE are very grateful to all of the members of the Foley American Legion for their generous donation in support of CARE’s mission of service to seniors.



## DONATIONS RECEIVED FROM CARE CLIENT FAMILIES

The card read, “My Aunt Kay was helped by your services on many occasions – she passed away about a year ago, and her estate recently settled – as one of her family, I’m sending a small donation in gratitude; and the hope that it will help continue your valuable services to seniors.”

Another letter, included with a memorial bequest donation read, “CARE is such a great program for the community and surrounding areas. Thank you and all of your wonderful volunteers for helping seniors stay in their homes, get to doctor appointments and many other ways you are there for seniors. We cannot forget always being good listeners.”

Please visit the CARE website at [careelders.org](http://careelders.org) for more information on how you can support CARE with an estate or memorial bequest donation. CARE is very grateful for this continued generosity.



### Fall Prevention and Home Safety

- ◆ *Remove Hazards:* Clear hallways and stairs of electrical cords, newspapers, and clutter. Remove throw rugs or secure them with double-sided tape.
- ◆ *Lighting:* Increase lighting, especially in stairways and hallways, and use motion-sensor nightlights.
- ◆ *Bathroom Safety:* Install grab bars in the shower and near the toilet. Use non-slip mats in the tub. Consider a walk-in shower or shower chair.
- ◆ *Mobility Support:* Install handrails on both sides of stairways. Keep frequently used items on lower shelves to avoid reaching.
- ◆ *Footwear:* Wear non-slip, well-fitting footwear inside.

### Emergency and Health Safety

- ◆ *Medical Alert System:* Wear a medical alert necklace or bracelet to call for help if a fall occurs.
- ◆ *Emergency Contact List:* Keep a list of emergency numbers, including family and doctors, near the phone or on the refrigerator.
- ◆ *Medication Management:* Store medications in a secure place, use child-resistant lids, and keep a current list of all medications.
- ◆ *Fire/Carbon Monoxide Safety:* Install smoke and carbon monoxide detectors on every level of the home and check batteries twice a year

### Supporting Independence and Emotional Well-being

- ◆ *Communication:* Set up a daily check-in system with neighbors or family.
- ◆ *Empathetic Approach:* Make safety improvements in a way that respects their independence, as losing autonomy can be distressing.
- ◆ *Technology:* Utilize smart home devices for monitoring, video calling, and home security.





## FOR A LAUGH - THOUGHTS ON AGING WELL

### REALITY CHECK

How old would you be if you didn't know how old you are? Be that.

- Eventually, you will reach a point when you stop lying about your age and start bragging about it.
- The older we get, the fewer things seem worth waiting in line for.
- Some people try to turn back their odometers. Not me. I want people to know why I look this way. I've traveled a long way and some of the roads weren't paved.
- Maturity means being emotionally and mentally healthy. It is that time when you know when to say yes and when to say no, and when to say WHOOPPEE!
- When you are dissatisfied and would like to go back to youth, just think of Algebra.
- You can't be over the hill without getting to the top.
- One of the many things no one tells you about aging is that it is such a nice change from being young.
- Age seldom arrives smoothly or quickly. It is more often a succession of jerks.
- Yeah, being young is beautiful, but being old is comfortable.
- If you don't learn to laugh at trouble, you won't have anything to laugh at when you are old.

### LOOKING GOOD



My face in the mirror isn't wrinkled or drawn.  
My house isn't dirty. The cobwebs are gone.  
My garden looks lovely and so does my lawn.  
I think I might never put my glasses back on.





**Cash Donations**

Andrew & Stephanie Rahm  
 Ann Tomporowski  
 Neil & Arlene DeZeller  
 Art Class participants  
 B&J Evergreen  
 Bonnie Maske  
 Brenda Berkebile – Benevity  
 Mustang Signs & Graphics  
 Cindy Niess  
 Clarence & Judy Kiffmeyer  
 Joe & Claudette Czech  
 Curt & Mary Jurek  
 Dan & Karen Martens  
 Dave & Kitty Herbst  
 Dayna White  
 Debra Kazeck  
 Del-Tone Shooting Range  
 Earl & Carol Bukowski  
 Erin Dohrmann  
 Foley American Legion  
 Foley Funeral Home  
 Gary & Carol Spoden  
 Gerald & Linda Bettendorf  
 Gilman Christian Women  
 Grace Glein  
 Gustavus Adolphus Church  
 Harold & Yvonne Linz  
 Jackie Guggenberger  
 Jane Frank  
 Janelle Dahmen –  
 Mighty Cause  
 Jim & Ruth Kothman  
 Joyce Notsch  
 Joyce Rife  
 Judy VonWald  
 Karen & Dan Martens  
 Karen Kampa  
 Kathleen Kampa  
 Kramer Financial LLC  
 Lucille Hovland  
 Ralph & Kathy Schmitz  
 Snap Fitness Foley

St. Cloud Knights of Columbus  
 Bruce & Lora Knafla  
 Mardelle Hinkemeyer  
 Gerry & Marilyn Hovde  
 Martha Dubbin  
 Robert & Mary Carlson  
 Mary Hinz  
 Mary Quirk  
 Mike & Lynda Gans  
 Mike, Mark & Leslie Hess  
 Nancy Zeug  
 Northwoods Dirt Works LLC  
 Paige & Tom Henry  
 Rachelle Kieger  
 Rice American Legion #473  
 Ron & Marie Herbst  
 Saints Peter & Paul  
 Catholic Church  
 Schmidt Insurance  
 Senior Social participants  
 Steve & Mary Heinen  
 The Insurance Shoppe  
 Theodore Beebe  
 Theodore Beebe  
 Vicky Sarvela – Thrivent  
 Virgil Spiczka – Excel Energy  
 Warren & Judy Peschl  
 Yvonne Linz

**In-Kind (non-cash) Donations**

Linda Goodman  
 Bill Kalton



**Thrivent Financial  
Members**

Twice per year, members have the opportunity to request donations in the amount of \$250 for charity.

CARE is grateful to each of our donors for their support in naming CARE as recipient of these donations.

These funds are used by CARE to purchase supplies for use in our fundraising events each year.

Are you a Thrivent Member?

Please call the CARE office at 320-968-7848 to have your name added to the list of those generous donors.

*Thank you!*

**SPONSOR THE PUBLICATION OF THIS NEWSLETTER**

ANNUAL SPONSORSHIPS ARE A GREAT WAY TO SHOW YOUR PUBLIC SUPPORT OF CARE AND OUR MISSION TO ASSIST THE ELDERS OF YOUR COMMUNITY. CALL CARE TODAY TO SET UP YOUR SPONSORSHIP AND HAVE YOUR LOGO DISPLAYED QUARTERLY IN THIS PUBLICATION.

## OUR SINCERE GRATITUDE TO ALL! *THANK YOU!*

### Bequests

Allen C. Jergenson	in memory of Delores Yeager
Carol Brunn	in memory of Jerry Brunn
Frannie Harper	in memory of Craig & Donald Corrigan
Grace Glein	in memory of Joan Neyssen
Harvey Helmin	in memory of Steve "Butch" Chmielewski II
Larry & Janet Kroska	in memory of Don Hoff
Larry & Janet Kroska	in memory of Jerry Brunn
Joan Mazacek	in memory of Steve "Butch" Chmielewski II
Judy Rudnitski	in memory of Steve "Butch" Chmielewski II
Julianne Kemink	in memory of Mary Jane Gapinski
Linda Schyma	in memory of Gary Schyma
Lucy Jurek	in memory of Steve "Butch" Chmielewski II
Marjorie Moeller	in memory of Josie Kampa
Marjorie Moeller	in memory of Robert Abfalter
Mary Januschka	in memory of Kathy (Kay) Corrigan
Mary Presely	in memory of Kathy (Kay) Corrigan
Pam Foss	in memory of Steve "Butch" Chmielewski II
Rebekah Syverson	in memory of Steve "Butch" Chmielewski II
Robyn Fay-Ortman	in memory of Steve "Butch" Chmielewski II
Alan & Rose Moulzolf	in memory of Steve "Butch" Chmielewski II
Roxanne Chmielewski	in memory of Steve "Butch" Chmielewski II
Bill & Gini Kalton	in memory of Jan Spiczka
Joan Mazacek	in memory of Claudette Czech
Sabine Lefebvre	in memory of Mary Agnes Shimota



Special thanks for grant funding from the



Special thanks for a generous donation to assist with the printing of this newsletter from:



### **RENT AND UTILITIES**

#### **SPONSORS**

JANUARY

**JOEL & PAM FOSS**

**LESLIE, MIKE & MARK HESS**

FEBRUARY

**GRACE GLEIN**

**FOLEY FUNERAL HOME**

MARCH

**FOLEY AMERICAN LEGION**

**BILL & GINI KALTON**



**CARE - Community Action Respecting Elders**

321 6th Avenue  
PO Box 65  
Foley MN, 56329  
320.968.7848  
www.CAREelders.org

Non-Profit  
Prsrt  
**PAID**  
Permit No. 11  
Foley, MN

ADDRESS CORRECTION REQUESTED

**Energy and cost saver! To request our newsletter by email call 320-968-7848**

***MARK YOUR CALENDAR!***

**APRIL**

- Aging Well Fitness Classes** Tuesdays 1-2 pm
- 09** KC Pancake Breakfast, 8:00 am - 12 noon
- 13** All Food Distribution Programs 11:00 am
- 15** Senior Social 11 am - 2 pm
- 21** Art Class 10:00 am - 12:00 noon

**JUNE**

- Aging Well Fitness Classes** Tuesdays 1-2 pm
- 04** Annual Golf Tournament 12:00 noon tee-off
- 08** All Food Distribution Programs 11am
- 16** Art Class 10:00 am - 12:00 noon
- 15-17** CARE Corn Dog Cabin 10 am - 9 pm
- 17** Senior Social 11am - 2 pm

**MAY**

- Aging Well Fitness Classes** Tuesdays 1-2 pm
- 11** All Food Distribution Programs 11:00 am
- 14** Pork Chop Dinner/Silent Auction 4-7:30 pm
- 19** Art Class 10:00 am - 12:00 noon
- 20** Senior Social 11 am - 2 pm

**JULY**

- Aging Well Fitness Classes** Tuesdays 1-2 pm
- 13** All Food Distribution Programs 11:00 am
- 15** Senior Social 11am - 2 pm
- 21** Art Class 10:00 am -12:00 noon